



LIGHT SPECS

SEPTEMBER 2019

LOCATION	WHAT	QT	DESCRIPTION
BALCONY	Desk	1x	AVOLITES PEARL EXPERT PRO WITH TOUCHWING [SOFTWARE VERSION 10.1.]
		42x	2KW DIMMERCHANNEL
	Dimmers	6x	2KW DIMMERCHANNEL ON STAGEFLOOR [NOT PATCHABLE]
		6x	2KW DIMMERCHANNEL LEKO'S FRONT [NOT PATCHABLE]
STAGE	Conventional	12x	PAR64 230V 1000W MFL [CP62 - SINGLY PATCHED]
		2x	PAR36 ACL-SET [2000W]
		4x	CATEYE [500W]
		6x	PAR64 230V 1000W FLOORCAN MFL [CP62]
		4x	SHOWTEC ACTIVE SUNSTRIP [500W - WITH STAND]
	Intelligent	8x	MARTIN QUANTUM PROFILE [FIXED POSITION - IN TRUSS]
		12x	CLF CONAN RGBW LEDPAR WITH ZOOM 11 - 58 DEGREE [IN TRUSS]
		6x	CLF CONAN RGBW LEDPAR WITH ZOOM 11 - 58 DEGREE [FLOOR]
	Power	2x	MARTIN ATOMIC STROBE 3000 [IN TRUSS]
		1x	63A 3FASE CEE 230V/400V BEHIND STAGE - ACCES STAGERIGHT UPSTAGE DISTRIBUTION 1X63A CEE ->2X32A CEE BEHIND STAGE - ACCES STAGERIGHT UPSTAGE DISTRIBUTION 1X32A CEE ->6X 16A SHUKO
HALL	Conventional [Front]	1x	LEKO ADB DW-104 [15-42DEG, 1000W, UPSTAGE CENTER]
		5x	STRAND HARMONY [15-28DEG], 1000W, STAGE RIGHT > STAGE LEFT]
		4x	PAR64 230V 1000W MFL, SIDE FRONT [CP62]
	Conventional	1x	LEKO ADB DW-104 [15-42DEG, 1000W]
		Intelligent	4x
	14x		CLF CONAN RGBW LEDPAR WITH ZOOM 11 - 58 DEGREE
	Smoke	2x	SWEFOG XEON II INTELLAHAZER [LIGHTING BALCONY & STAGE]
	Gels		A VARIETY OF LEE COLOURGELS, SEE LIST
	Misc.	1x	FLYBAR FOR BACKDROP UPSTAGE 6M WIDE - MAX. 12KG - BACKDROPS ONLY! - NO POINTLOADS!



LIGHT SPECS - PATCH 1/3 CONVENTIONAL

SEPTEMBER 2019

4 DMX lines available:

A: Conventionals + Moving lights

B: Conans Stage

C: Conans Hall

D: Guest [Empty]

CONVENTIONAL

QT	DESCRIPTION	LOCATION	ADDRESS	PERSONALITY	REMARKS
6X	PARCANS	STAGE	A-1 > A-6		UPSTAGE TRUSS [SINGLY PATCHED]
6X	PARCANS	STAGE	A-7 > A-12		DOWNSTAGE TRUSS [SINGLY PATCHED]
2X	ACL	STAGE	A-13 > A14		A-13 UPSTAGE TRUSS / A-14 DOWNSTAGE TRUSS
4X	CATEYE	STAGE	A-15 > A-18		
1X	FRONT PROFILE [DJ]	HALL	A-24		HALL > STAGE LEFT
6X	FRONT PROFILE	FRONT	A-25 > A-30		STAGE RIGHT > STAGE LEFT
2X	SIDE PAR	HALL	A-31 > A-32		2X 2CH MIRRORED
3X	TOP PAR	STAGE	A-34 > A-36		TOP LIGHTS
6X	FLOOR	FRONT	A-37 > A-4		6X FLOORCAN 4X PASSIVE SUNSTRIP

* 6 FREE DIMMERCHANNELS ON THE FLOOR



LIGHT SPECS - PATCH 2/3 INTELLIGENT

SEPTEMBER 2019

INTELLIGENT

NR	DESCRIPTION	LOCATION	ADDRESS	PERSONALITY	REMARKS
1	SHOWTEC ACTIVE SUNSTRIP	STAGE	A-61	10 CHANNEL MODE - 10 DMX CHANNELS	ON FLOOR
2	SHOWTEC ACTIVE SUNSTRIP	STAGE	A-71	10 CHANNEL MODE - 10 DMX CHANNELS	ON FLOOR
3	SHOWTEC ACTIVE SUNSTRIP	STAGE	A-81	10 CHANNEL MODE - 10 DMX CHANNELS	ON FLOOR
4	SHOWTEC ACTIVE SUNSTRIP	STAGE	A-91	10 CHANNEL MODE - 10 DMX CHANNELS	ON FLOOR
1	MARTIN QUANTUM PROFILE	STAGE	A-101	STANDARD MODE - 27 DMX CHANNELS	IN TRUSS
2	MARTIN QUANTUM PROFILE	STAGE	A-128	STANDARD MODE - 27 DMX CHANNELS	IN TRUSS
3	MARTIN QUANTUM PROFILE	STAGE	A-155	STANDARD MODE - 27 DMX CHANNELS	IN TRUSS
4	MARTIN QUANTUM PROFILE	STAGE	A-182	STANDARD MODE - 27 DMX CHANNELS	IN TRUSS
5	MARTIN QUANTUM PROFILE	STAGE	A-209	STANDARD MODE - 27 DMX CHANNELS	IN TRUSS
6	MARTIN QUANTUM PROFILE	STAGE	A-236	STANDARD MODE - 27 DMX CHANNELS	IN TRUSS
7	MARTIN QUANTUM PROFILE	STAGE	A-263	STANDARD MODE - 27 DMX CHANNELS	IN TRUSS
8	MARTIN QUANTUM PROFILE	STAGE	A-290	STANDARD MODE - 27 DMX CHANNELS	IN TRUSS
9	MARTIN QUANTUM PROFILE	HALL	A-317	STANDARD MODE - 27 DMX CHANNELS	IN TRUSS
10	MARTIN QUANTUM PROFILE	HALL	A-344	STANDARD MODE - 27 DMX CHANNELS	IN TRUSS
11	MARTIN QUANTUM PROFILE	HALL	A-371	STANDARD MODE - 27 DMX CHANNELS	IN TRUSS
12	MARTIN QUANTUM PROFILE	HALL	A-398	STANDARD MODE - 27 DMX CHANNELS	IN TRUSS
1	MARTIN ATOMIC	STAGE	A-469	4 DMX CHANNELS	STAGE RIGHT DIPSWITCH 1, 3, 5, 7, 8, 9
2	MARTIN ATOMIC	STAGE	A-473	4 DMX CHANNELS	STAGE LEFT DIPSWITCH 1, 4, 5, 7, 8, 9
1	HAZER	BALCONY	A-509	2 DMX CHANNELS	CHANNEL 1 = HAZE CHANNEL 2 = FAN [MAX 90%]
	FREE CHANNELS		A-454 / A-508		



LIGHT SPECS - PATCH 3/3 LED

SEPTEMBER 2019

LED

NR	DESCRIPTION	LOCATION	ADDRESS	PERSONALITY	REMARKS
1	CLF CONANS	STAGE	B-1	EXTENDED MODE - 21 DMX CHANNELS	IN TRUSS F & G
2	CLF CONANS	STAGE	B-22	EXTENDED MODE - 21 DMX CHANNELS	IN TRUSS F & G
3	CLF CONANS	STAGE	B-43	EXTENDED MODE - 21 DMX CHANNELS	IN TRUSS F & G
4	CLF CONANS	STAGE	B-64	EXTENDED MODE - 21 DMX CHANNELS	IN TRUSS F & G
5	CLF CONANS	STAGE	B-85	EXTENDED MODE - 21 DMX CHANNELS	IN TRUSS F & G
6	CLF CONANS	STAGE	B-106	EXTENDED MODE - 21 DMX CHANNELS	IN TRUSS F & G
7	CLF CONANS	STAGE	B-127	EXTENDED MODE - 21 DMX CHANNELS	IN TRUSS F & G
8	CLF CONANS	STAGE	B-148	EXTENDED MODE - 21 DMX CHANNELS	IN TRUSS F & G
9	CLF CONANS	STAGE	B-169	EXTENDED MODE - 21 DMX CHANNELS	IN TRUSS H & D
10	CLF CONANS	STAGE	B-190	EXTENDED MODE - 21 DMX CHANNELS	IN TRUSS H & D
11	CLF CONANS	STAGE	B-211	EXTENDED MODE - 21 DMX CHANNELS	IN TRUSS H & D
12	CLF CONANS	STAGE	B-232	EXTENDED MODE - 21 DMX CHANNELS	IN TRUSS H & D
13	CLF CONANS	HALL	C-1	EXTENDED MODE - 21 DMX CHANNELS	IN TRUSS C
14	CLF CONANS	HALL	C-22	EXTENDED MODE - 21 DMX CHANNELS	IN TRUSS C
15	CLF CONANS	HALL	C-43	EXTENDED MODE - 21 DMX CHANNELS	IN TRUSS C
16	CLF CONANS	HALL	C-64	EXTENDED MODE - 21 DMX CHANNELS	IN TRUSS A
17	CLF CONANS	HALL	C-85	EXTENDED MODE - 21 DMX CHANNELS	IN TRUSS A
18	CLF CONANS	HALL	C-106	EXTENDED MODE - 21 DMX CHANNELS	IN TRUSS E
19	CLF CONANS	HALL	C-127	EXTENDED MODE - 21 DMX CHANNELS	IN TRUSS E
20	CLF CONANS	HALL	C-148	EXTENDED MODE - 21 DMX CHANNELS	IN TRUSS E
21	CLF CONANS	HALL	C-169	EXTENDED MODE - 21 DMX CHANNELS	IN TRUSS E
22	CLF CONANS	HALL	C-190	EXTENDED MODE - 21 DMX CHANNELS	IN TRUSS E
23	CLF CONANS	HALL	C-211	EXTENDED MODE - 21 DMX CHANNELS	IN TRUSS B
24	CLF CONANS	HALL	C-232	EXTENDED MODE - 21 DMX CHANNELS	IN TRUSS B
25	CLF CONANS	HALL	C-253	EXTENDED MODE - 21 DMX CHANNELS	IN TRUSS B
26	CLF CONANS	HALL	C-274	EXTENDED MODE - 21 DMX CHANNELS	IN TRUSS B
27	CLF CONANS	FRONT	C-295	EXTENDED MODE - 21 DMX CHANNELS	GRIT
28	CLF CONANS	FRONT	C-316	EXTENDED MODE - 21 DMX CHANNELS	GRIT
29	CLF CONANS	FRONT	C-337	EXTENDED MODE - 21 DMX CHANNELS	GRIT
30	CLF CONANS	FRONT	C-358	EXTENDED MODE - 21 DMX CHANNELS	GRIT
31	CLF CONANS	FLOOR	C-379	EXTENDED MODE - 21 DMX CHANNELS	STAGE FLOOR
32	CLF CONANS	FLOOR	C-400	EXTENDED MODE - 21 DMX CHANNELS	STAGE FLOOR
33	CLF CONANS	FLOOR	C-421	EXTENDED MODE - 21 DMX CHANNELS	STAGE FLOOR
34	CLF CONANS	FLOOR	C-442	EXTENDED MODE - 21 DMX CHANNELS	STAGE FLOOR
35	CLF CONANS	FLOOR	C-463	EXTENDED MODE - 21 DMX CHANNELS	STAGE FLOOR
36	CLF CONANS	FLOOR	C-484	EXTENDED MODE - 21 DMX CHANNELS	STAGE FLOOR



LIGHT SPECS - HARTING

SEPTEMBER 2019

HARTING

SHUKO	HARTING A	HARTING B	HARTING C	HARTING D	HARTING E	HARTING F	HARTING G	HARTING H
1		DJ PROFILE [DMX A-24]	PC SIDE FRONT [DMX A-33]	CATEYE 4 [DMX A-18]	PC SIDE FRONT [DMX A-33]		CATEYE 1 [DMX A-15]	CATEYE 3 [DMX A-17]
2			PAR SIDE FRONT [DMX A-32]	PAR 12 [DMX A-12]	PAR SIDE FRONT [DMX A-32]		CATEYE 2 [DMX A-16]	PAR 7 [DMX A-7]
3			PAR SIDE FRONT [DMX A-31]	PAR 11 [DMX A-11]	PAR SIDE FRONT [DMX A-31]	PAR 3 [DMX A-3]	PAR 6 [DMX A-6]	PAR 8 [DMX A-8]
4				PAR 10 [DMX A-10]	TOP PAR STAGE [DMX A-34]	PAR 2 [DMX A-2]	PAR 4 [DMX A-4]	PAR 9 [DMX A-9]
5					TOP PAR STAGE [DMX A-35]	PAR 1 [DMX A-1]	PAR 5 [DMX A-5]	
6					TOP PAR STAGE [DMX A-36]	ACL [DMX-13]		ACL [DMX A-14]
7	VS [CONANS]	VS [CONANS]	VS [CONANS]		VS [CONANS]	VS [CONANS]	VS [CONANS]	VS [CONANS]
8	VS [FANS]	VS [SPOTS]	VS [FANS]		VS [FANS]	VS [SPOTS]	VS [SPOTS]	VS [SPOTS]

DE HELLING



De Helling

Helling 7

3523CB Utrecht

The Netherlands

+31[0]30 22 1 99 44

production@dehelling.nl

www.dehelling.nl

LIGHT SPECS - GELS

SEPTEMBER 2019

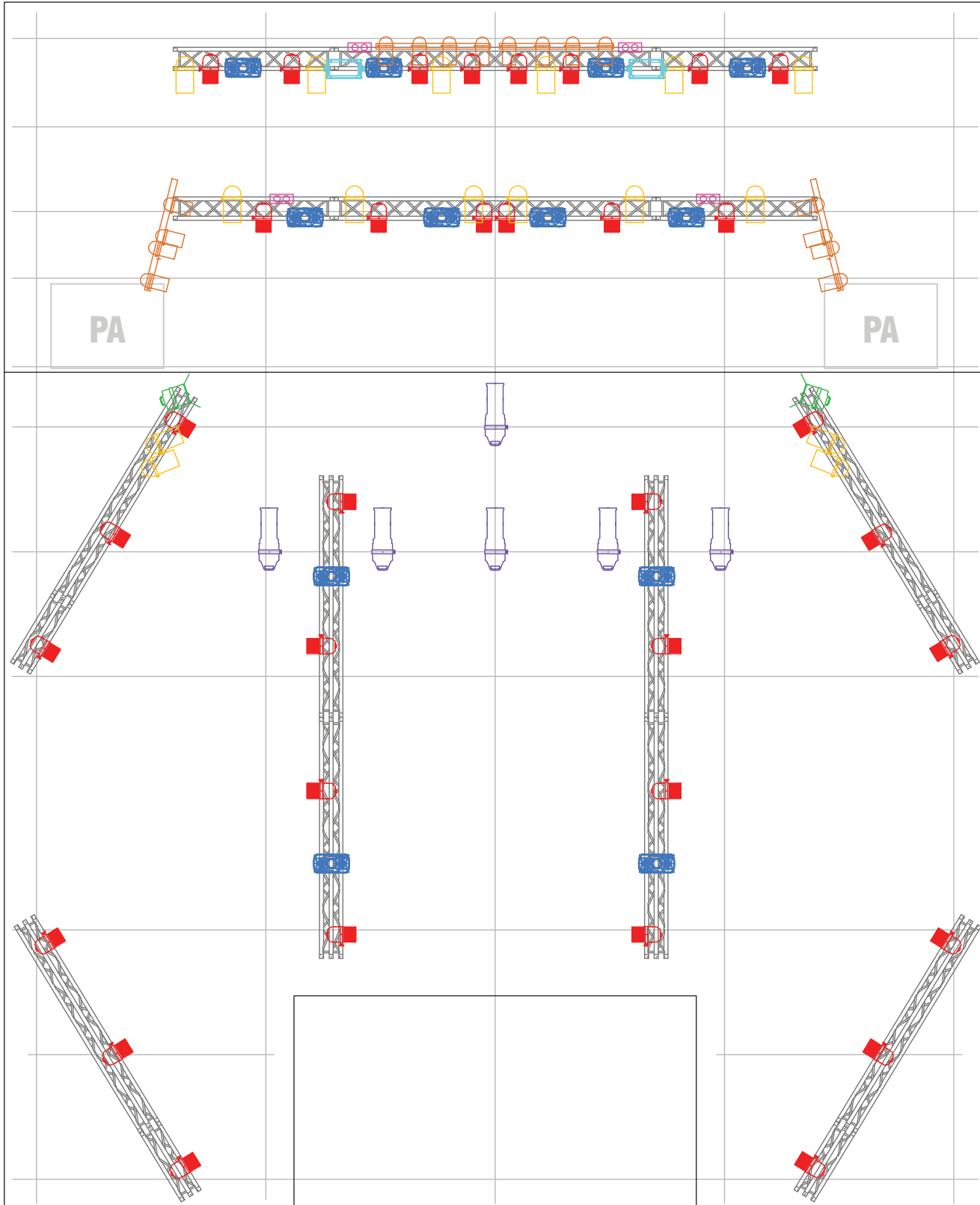
GELS

LEE NR	LEE NR	LEE NR	LEE NR	LEE NR	LEE NR	LEE NR	LEE NR	LEE NR
8	79	111	127	147	170	200	220	715
15	89	113	128	148	174	201	228	765
19	90	115	129	151	180	202	241	777
21	100	116	132	152	181	203	243	789
22	101	117	134	153	182	204	256	793
26	102	118	135	156	183	205	322	797
27	103	119	136	157	193	206	327	995
46	104	120	137	158	194	207	328	
48	105	121	139	161	195	208	332	
58	106	122	141	164	196	209	343	
71	107	124	142	165	197	210	366	
75	110	126	143	166	198	219	707	











LIGHT SPECS - PLOT

SEPTEMBER 2019



Legenda

-  **Martin Quantum Profile**
Standard mode - 23 channels
-  **CLF Conan**
Extended mode - 21 channels
-  **Martin Atomic 3000**
With effects - 4 channels
-  **PAR64 // 1000W**
MFL / CP62
-  **Profile // 1000W**
15° - 35°
-  **Fresnel // 1000W**
-  **Showtec Compact Blinder**
-  **ACL // 8x 250W**
4-bar PAR36